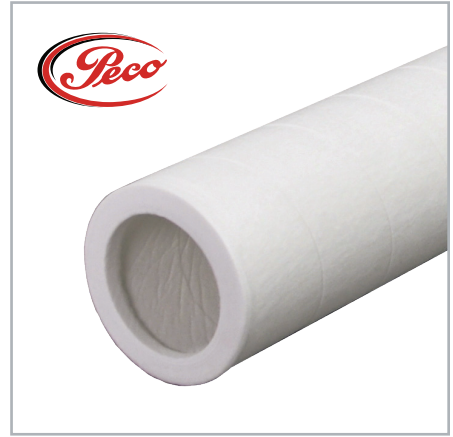


PECO Series PCHG

PEACH® DYNASEP™
PEACH DEPTH STYLE
GAS FILTER-SEPARATOR CARTRIDGES

for use in PECO Series 75 & 85 filter-separator vessels
or competitor vessels of similar design



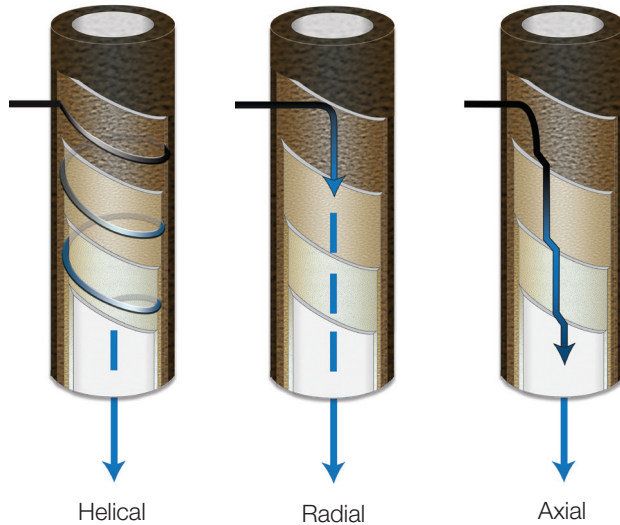
The PEACH DynaSep, Series PCHG, cartridge is a great choice for removing deformable & shear-sensitive contaminants found in natural gas streams. This cartridge can be used in the PECO Series 75 and Series 85 vessels, as well as in several competitor filter-separator vessels. The synthetic construction allows for an environmentally

friendly product and an excellent upgrade option to traditional fiberglass cartridges. The Series PCHG is made using the patented PEACH process which provides increased flow, high efficiency and effective removal of contaminants. This equates to increased operational life, fewer change-outs, reduced maintenance and reduced costs.

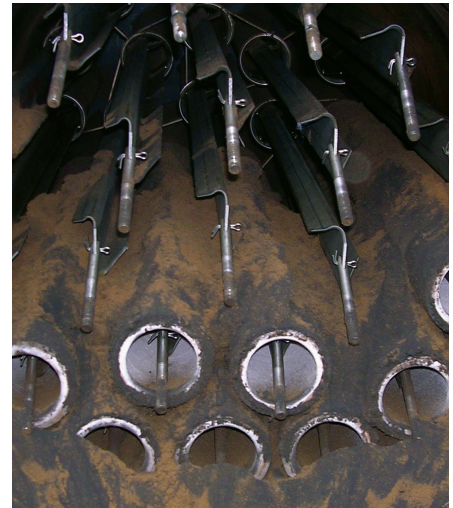
PEACH® is a patented manufacturing process for making a unique depth style filter cartridge. Through thermal bonding, spiral layers of engineered filtration media are applied to conform and overlap each previous layer forming a conical helix pattern. This filter structure results in a gradient density pattern that provides an extraordinary flow path in radial, axial and helical directions. This tortuous flow path yields high contaminant loading, structural strength, maximum efficiency, and an overall outstanding filtration performance.



THREE FLOW PATHS FOR UNPARALLELED FILTRATION



Removes Contaminants such as:
Asphaltenes, Coal Fines, Dirt, Iron Sulfides,
Molecular Sieve Dust, Pipe Scale, Salts,
Sand, Wear Metals



ENGINEERING YOUR SUCCESS.

MATERIALS

MEDIA	PEACH Polyester or Polypropylene
CORE	Plated Steel (if required)
END CAPS	Integral End Caps (Standard – No Gasket Seal Required) Plated Steel (Optional)
SEAL	None (Standard), Buna-N, EPDM, Viton®

OPERATING DATA

FLOW DIRECTION: Outside-to-Inside

MAX. TEMP: Polypropylene 180°F / 82°C
Polyester 240°F / 116°C

MAX. DIFFERENTIAL PRESSURE:

3.0"OD: 25 psid (no core) / 1.7 bar (no core)
50 psid (with core) / 3.4 bar (with core)

4.5"OD: 25 psid (no core) / 1.7 bar (no core)
50 psid (with core) / 3.4 bar (with core)

5.5"OD: 35 psid (with core) / 2.4 bar (with core)

RECOMMENDED CHANGE-OUT

DIFFERENTIAL PRESSURE: 12–15 psi / 0.8–1.0 bar

- Max. Pressure may be limited by housing manufacturer's design

PERFORMANCE

MICRON RATING: 0.1, 0.3, 0.5, 1, 5, 10

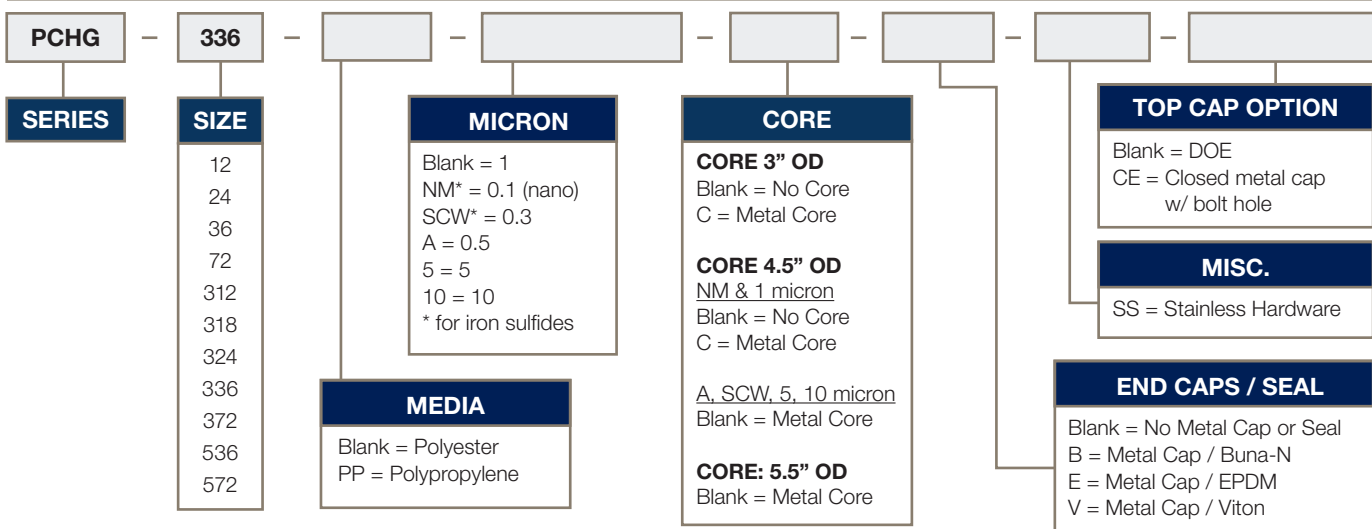
EFFICIENCY: 99.98%

- The 0.1µm rated cartridge contains nanofibers within the PEACH depth structure
- 0.1µm and 0.3µm ratings are recommended when iron sulfide removal is required

NOMINAL DIMENSIONS

SIZE	O.D.	I.D.	LENGTH
12	3" / 76mm	2.1" / 54mm	12" / 305mm
24	3" / 76mm	2.1" / 54mm	24" / 610mm
36	3" / 76mm	2.1" / 54mm	36" / 914mm
72	3" / 76mm	2.1" / 54mm	72" / 1829mm
312	4.5" / 114mm	3.1" / 79mm	12" / 305mm
318	4.5" / 124mm	3.1" / 79mm	18" / 458mm
324	4.5" / 114mm	3.1" / 79mm	24" / 610mm
336	4.5" / 114mm	3.1" / 79mm	36" / 914mm
372	4.5" / 114mm	3.1" / 79mm	72" / 1829mm
536	5.5" / 140mm	4.25" / 108mm	36" / 914mm
572	5.5" / 140mm	4.25" / 108mm	72" / 1829mm

ORDERING INFORMATION



Integral End Caps are a feature of PEACH. It eliminates the need for a separate gasket and provides the same durometer/hardness.



The CE Top End Cap option eliminates the need to keep up with a reusable, separate dimple washer cap that is required to seal the double open end (DOE) style cartridge.



Optional bottom metal end cap with gasket seal.

- Consult factory for available options.
- Viton® is a registered trademarks of E. I. du Pont de Numours and Company.

© 2019 Parker Hannifin Corporation
DS-OG-PEACHDYNASEP-PCHG-190710



Parker Hannifin Corporation
Industrial Process Filtration Division

PO Box 640 | Mineral Wells, TX 76068
Phone 940-325-2575 | Toll Free 1-800-877-7326
Email IPF_AM_TechSupport@parker.com
www.parker.com/ipf